

POWER MOSFET PHOTOVOLTAIC RELAYS

DC, SPST/NO

DIH-140

DIH-140-A

DIH-140 and DIH-140-A are both DC, SPST Normally Open Solid State Relays derived from the earlier DIH-126 SSR. These new relays have electrical parameters in conformance with WIRING CONFIGURATION II shown in the DIH-126 specification sheet, both using a single MOSFET for DC operation. The DIH-140 and 140-A both have added PROGRAMMING CIRCUITRY so that an external resistor, R_p , can determine the maximum current which will cause the relay to open. The DIH-140-A has also added a THERMAL SENSOR which is linked to the power MOSFET and will cause the relay to open when an unsafe temperature is sensed. Demonstrating internal hysteresis, the relay is automatically restarted when it cools to a safe temperature, eliminating the need for system restart signals. These ON-OFF cycles will repeat as long as the overload condition exists. When it is removed, the relay returns to normal operation.

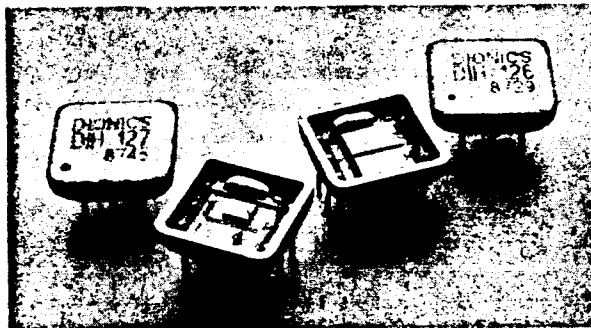
MAX LOAD CURRENT
CONTINUOUS 1.2 A
25 mS SURGE 1% 8 A

BLOCKING VOLTAGE 200 V

ON RESISTANCE (R_{on}) 0.4 ohm

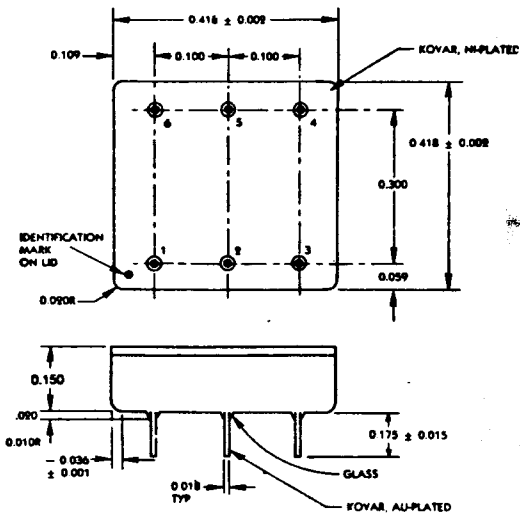
TURN ON TIME (T_{on}) 0.50 ms

TURN OFF TIME (T_{off}) 0.05 ms

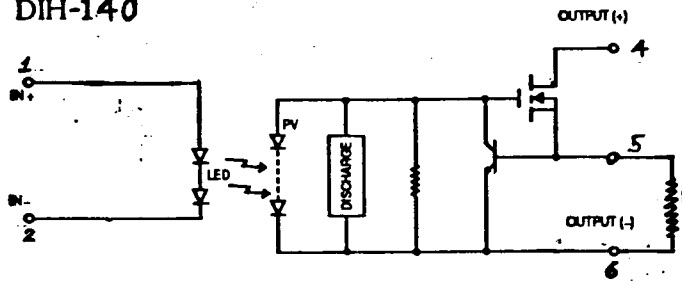


EQUIVALENT CIRCUIT

PACKAGE (Top View)

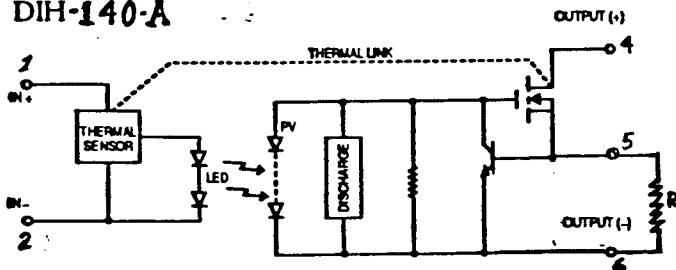


DIH-140



EQUIVALENT CIRCUIT

DIH-140-A



DIONICS

DIONICS, INC. • 65 RUSHMORE STREET, WESTBURY, NEW YORK 11590
(516) 997-7474 • TWX 510 222 0974 • FAX: (516) 997-7479

